

PIG HANDLING EQUIPMENT

Propipe supplies pig loading and handling equipment for a variety of applications: -

A. Pig Loading Arms

A simple, solid or sectioned push rod that can be used with a fork-lift or manually to engage the pig in the launcher neck (figure 1)



fig. 1

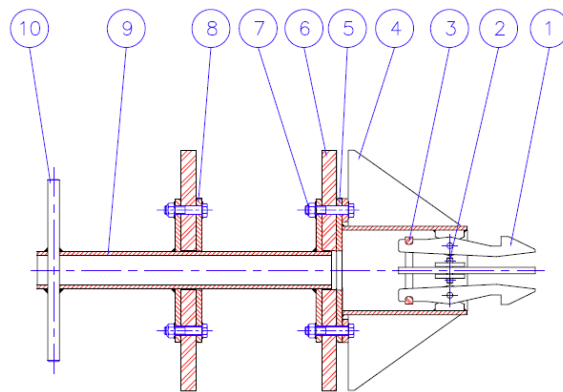


fig.2

Can also be used for pig retrieval, with a suitable hook. ROV-operable versions are also possible (figure 2)

B. Pig Loading Tray

Using a hydraulic ram and sectioned push-rods, this pig loading system is designed to provide safe, easy loading of pigs without the need for heavy mechanical machinery.

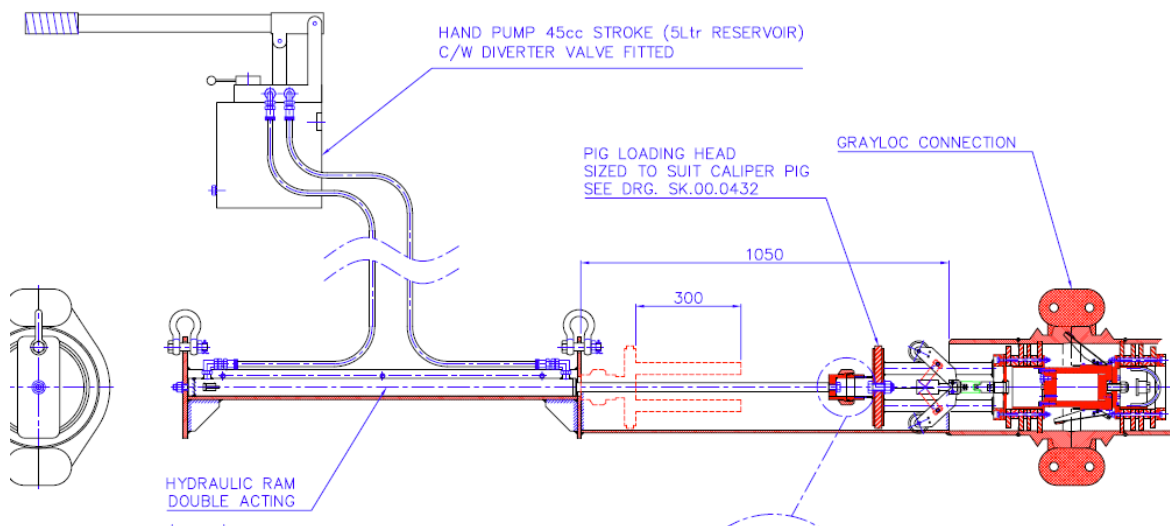


fig 3

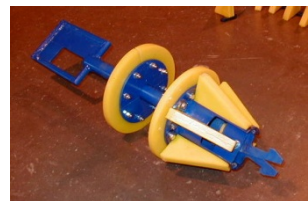
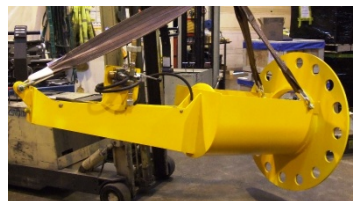
PIG HANDLING EQUIPMENT



fig 4

Propipe has produced numerous special designs, each tailored to the particular application and project. Mating flanges for loading trays can be supplied to fit against all joint types, from ANSI flanges through to Compact flanges and Yolk-Type connections.

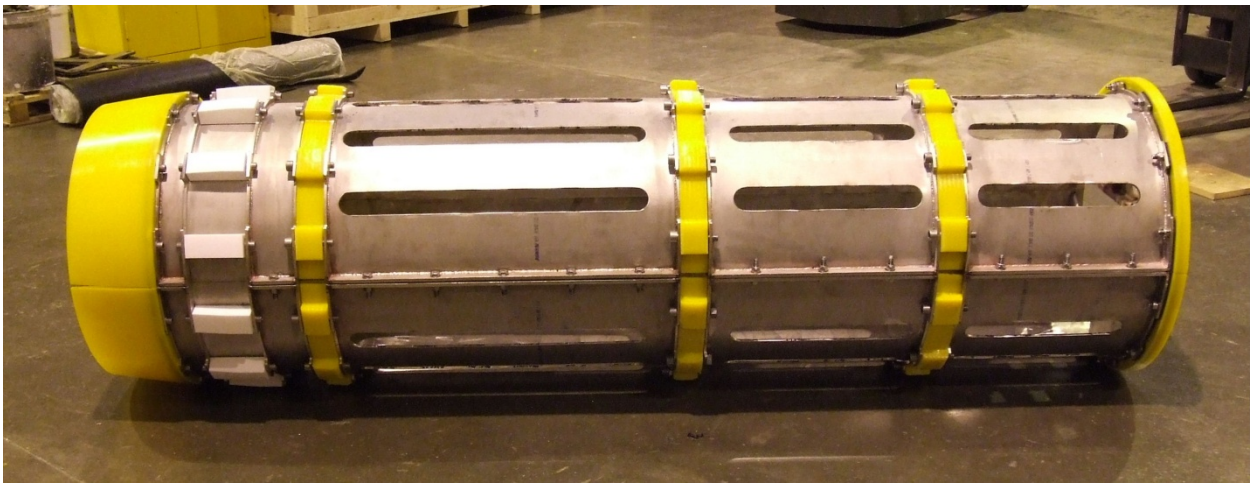
Designs using polyurethane or steel gripper jaws can also be provided where only field joints are present.



C. Pig Launching and Receiving Cassettes

Pig cassettes are used to provide safe receipt or launching of pigs in vertical permanent pig launchers and receivers and also where there is a risk that pigs may travel down bypass nozzles and into process equipment. They are ideal where pigs are to be received into sphere-receivers, where the pig may stop well short of the closure door.

Examples of carbon steel and stainless steel cassettes: -



26" x 30" Stainless Steel Cassette



42" Vertical Cassette

Cassette Bypass Ends

